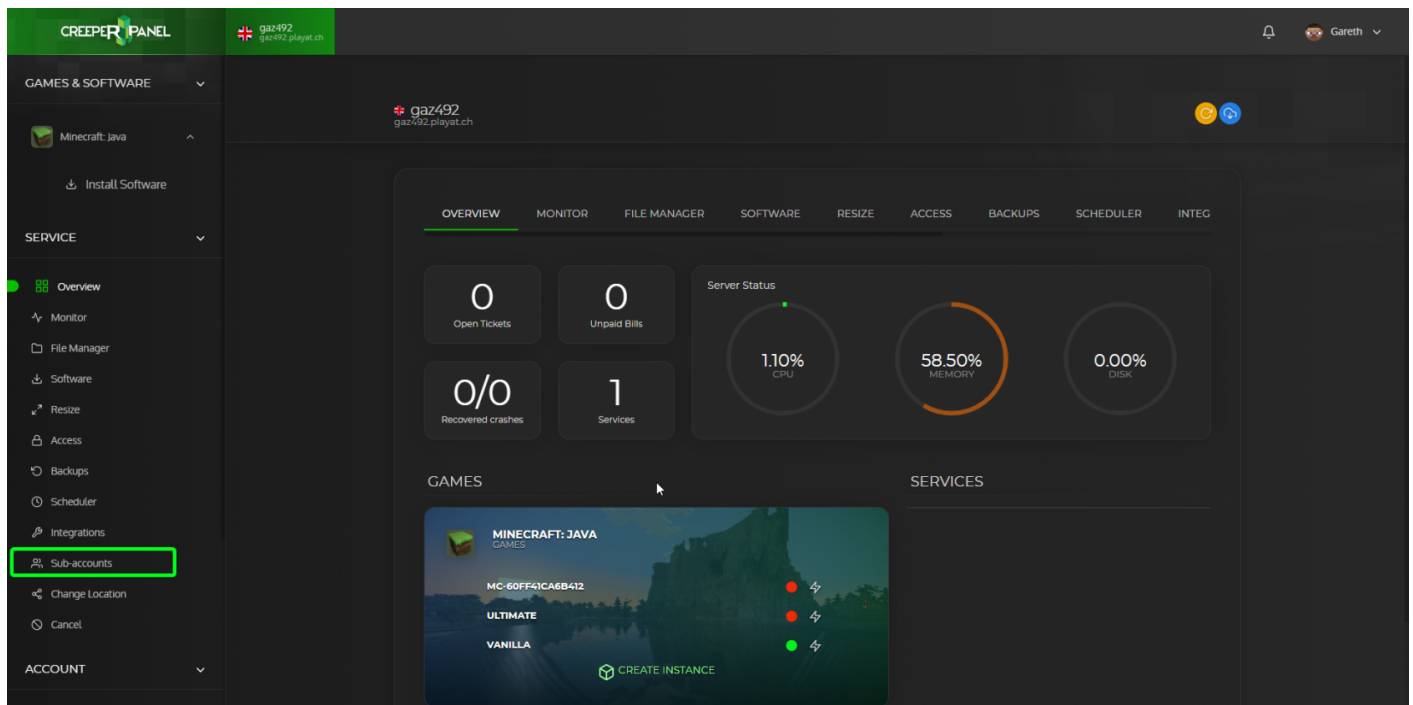


Adding sub-accounts

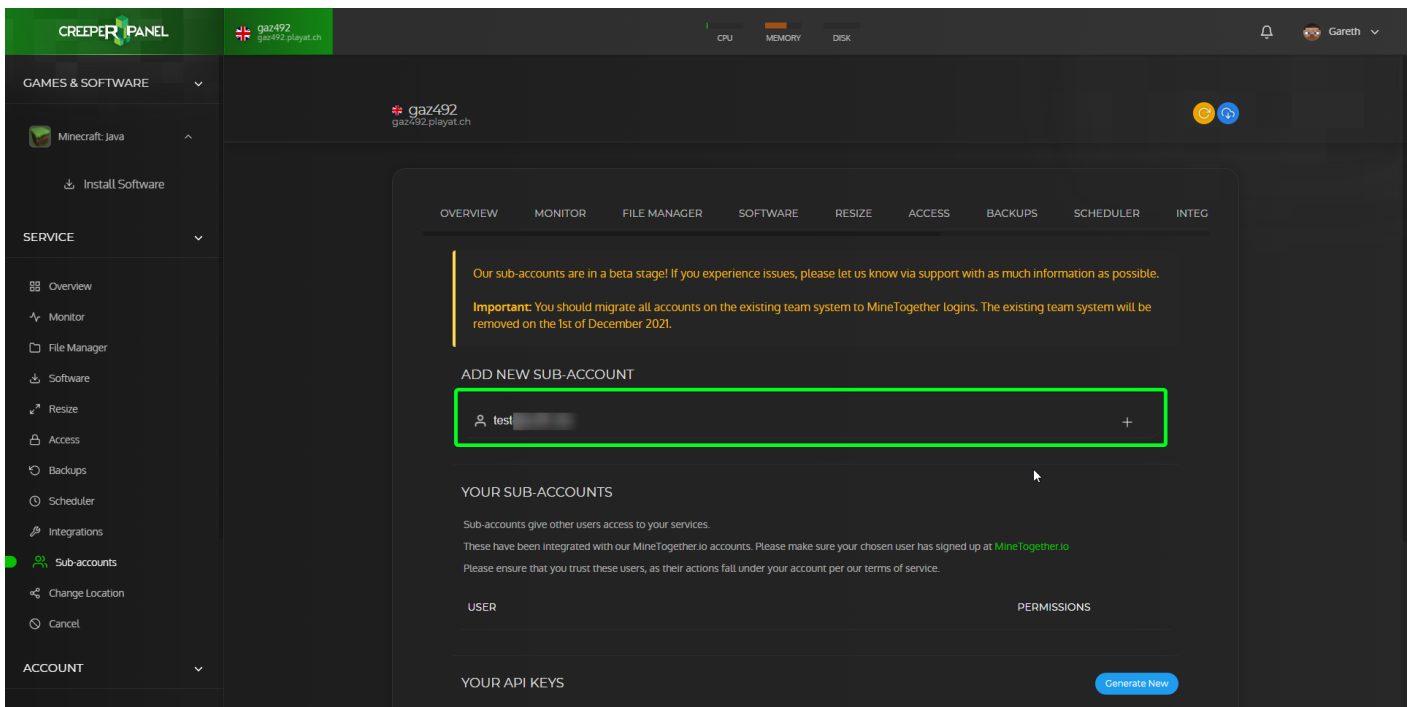
Sub-accounts require the target user to have created a MineTogether account, you can link the user to the following guide on creating a MineTogether account.

<https://www.creeperhost.net/wiki/books/minetogther/page/creating-an-account>

To add a sub-account to your service click on the Sub-accounts link in the sidebar of the panel



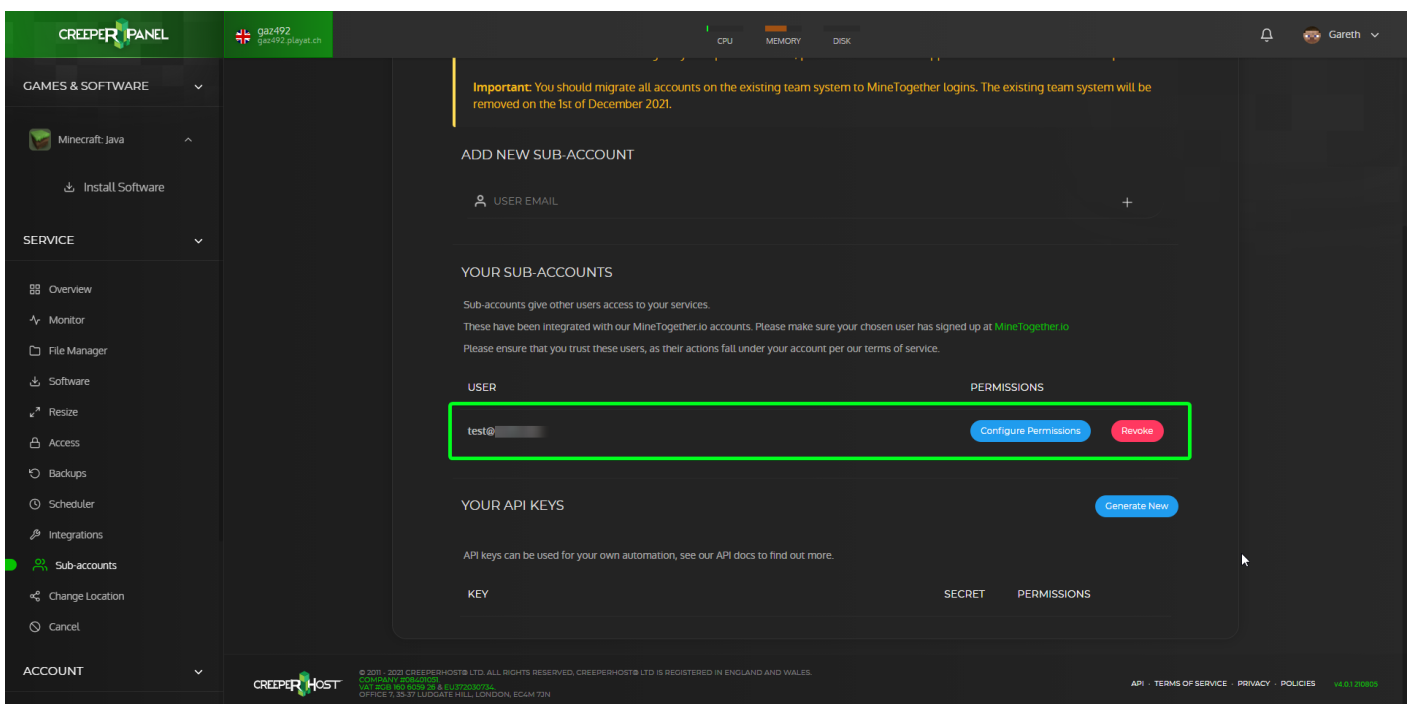
Now enter the email address of the user you wish to add (**The email address must be the same as the one they used to create a MineTogether account**) then click on the + button



You should now see that the user has been added to the Your sub-accounts section where you can configure what they have access to via the Configure Permissions button or remove them by clicking on the Revoke button.

A guide on user permissions can be found at

<https://www.creeperhost.net/wiki/books/creeperpanel/page/setting-sub-account-permissions>



Revision #2

Created 5 August 2021 18:00:59 by Gareth W

Updated 11 January 2024 00:21:23 by Gareth W